

Fu Face Mask

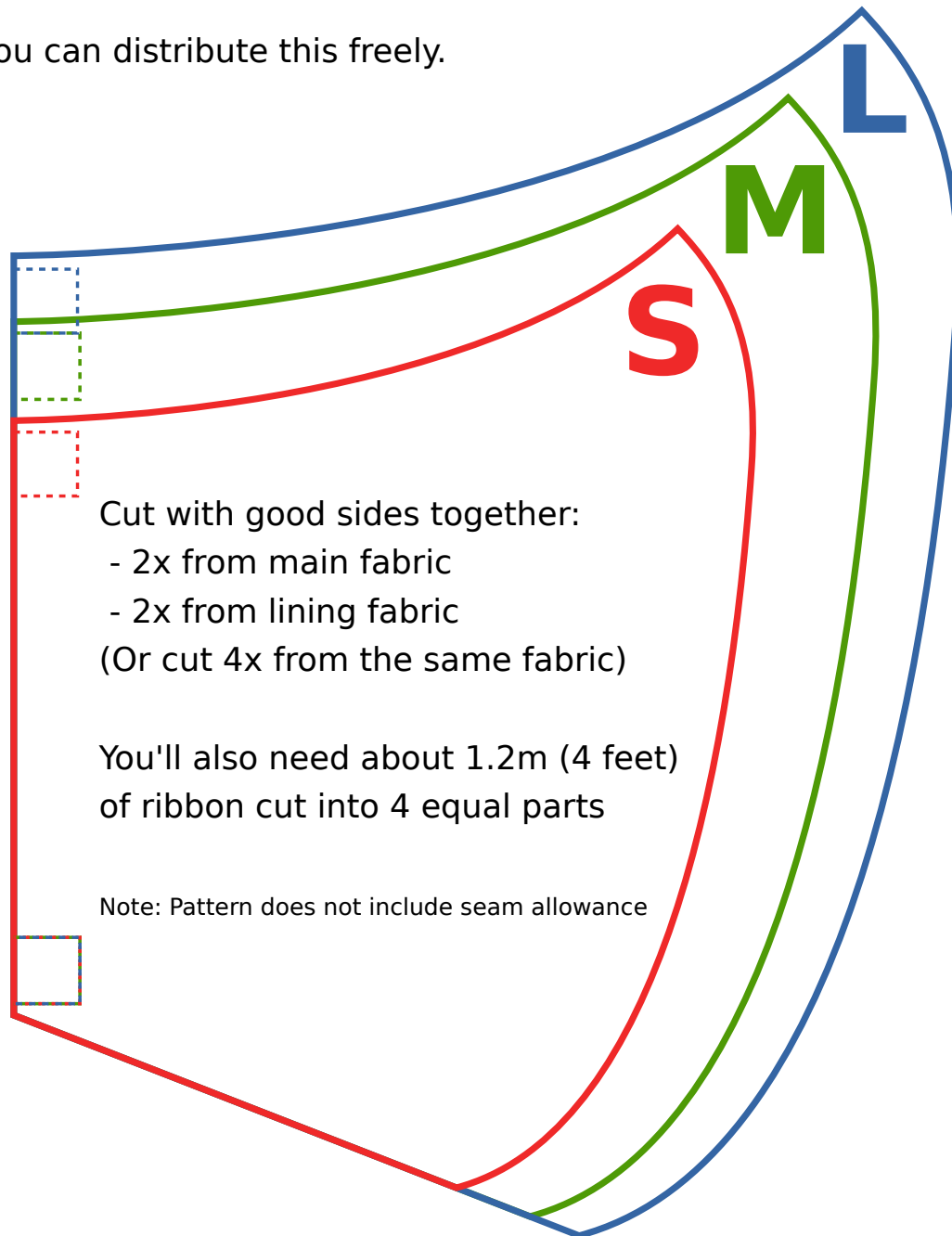


This is based on freeseewing.org's Fu Face Maks pattern.

You can generate your own at: <https://freeseewing.org/designs/fu/>

Instructions: <https://freeseewing.org/docs/patterns/fu/instructions/>

You can distribute this freely.



Cut with good sides together:

- 2x from main fabric
- 2x from lining fabric

(Or cut 4x from the same fabric)

You'll also need about 1.2m (4 feet)
of ribbon cut into 4 equal parts

Note: Pattern does not include seam allowance

The (white) inside of this box should be 10cm wide
The (black) outside of this box should be 4" wide